

Installation Instructions **CorControl Software**

From Version 2.0.0.40



1. Introduction

The CorControl Software is already installed as standard on your LD20PC laptop correlator. Please follow the instructions below if for any reason you should need to install it again.

Please read the instructions carefully before you continue with the installation of the CorControl Software. The following criteria must be fulfilled before the program is installed in order to ensure that you get maximum benefit from the program and that the program runs smoothly.

1.1 Hardware Requirements

The following requirements must be fulfilled by the LD20PC correlator if the CorControl Software installation is to be completed successfully.

The program cannot be started if there is no correlator card in the unit or if the card is defective.

- Pentium or compatible CPU with 500 MHz and more
- 128 MB RAM
- Hard disk storage unit with 20 MB free storage space
- CD / DVD drive
- VGA / SVGA graphic card with a resolution of min. 800 x 600 pixels
- Mouse and keyboard

1.2 Software Requirements

One of the following operating systems with the matching Service Pack must be installed on the LD20PC correlator so that the software can be installed.

The program cannot be started if the installation is performed with another operating system.

Supported Operating Systems:

- Windows 2000 / Service Pack 4
- Windows XP / Service Pack 2

Attention!

You will require Administrator Privilege on your correlator to install and use the program. The program cannot be started if this is not the case.



2. Installing the CorControl Software

Proceed as follows to install the software.

After you have started the setup program, select a language which you would like to use while the program is being installed.

Click on "Next" on the welcome screen (fig.1). A window with the Licence Agreement (fig. 2) will appear. Please read the agreement carefully.

If you agree to the terms and conditions of the licensing agreement, click on "I accept the agreement" and click then on "Next". If you do not wish to accept the terms of the agreement, the installation will be terminated and the software will not be installed.

The installation path of the program that is to be installed is shown in the next step (fig. 3). The installation path "C:\Program Files\CorControl" appears as standard in the box. This can be changed using the browse button.

Click on "Next" as soon as all the settings have been performed in order to reach the next installation step.



Figure 1

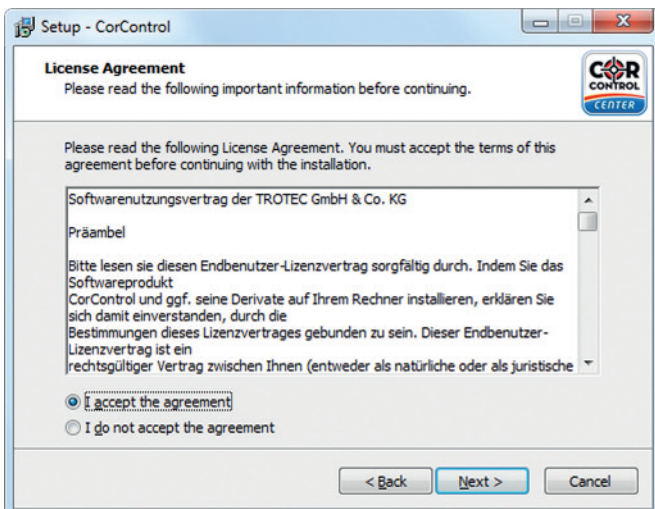


Figure 2

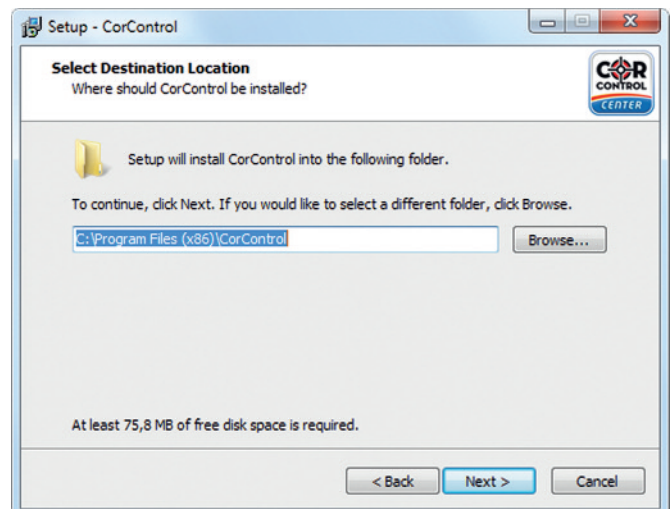


Figure 3

The message *"Folder does not exist"* appears. Click on **"Yes"** to create a folder in which the program is to be installed. Assign a name to the start menu folder in the next step (fig. 4).

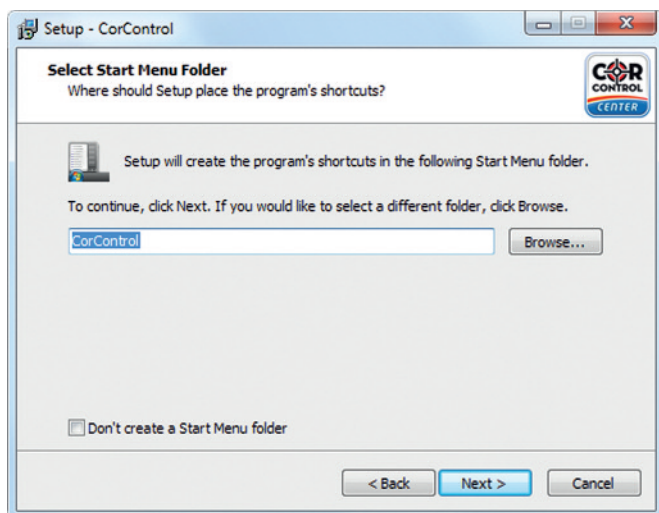


Figure 4

"CorControl" appears as standard in the box. This can also be changed using the *"Browse"* button. Click on **"Next"** when all the settings have been performed.

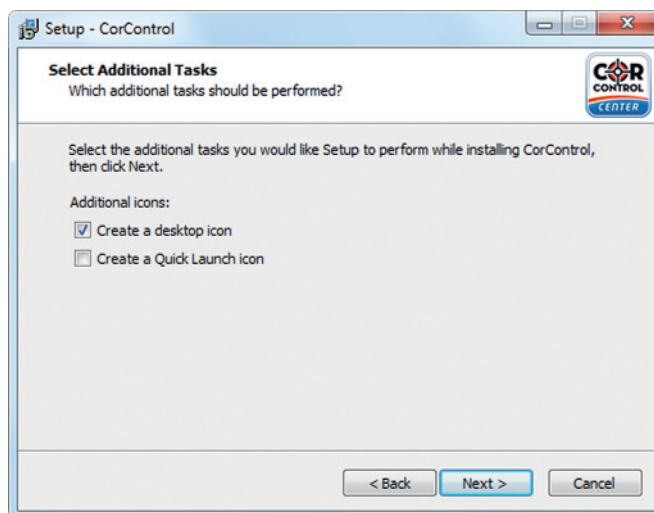


Figure 5

You can then determine if you would like a symbol (program icon) to be displayed on the desktop (fig. 5). Click on **"Next"** and then **"Install"** in the next dialogue window (fig. 6) to start the software installation.

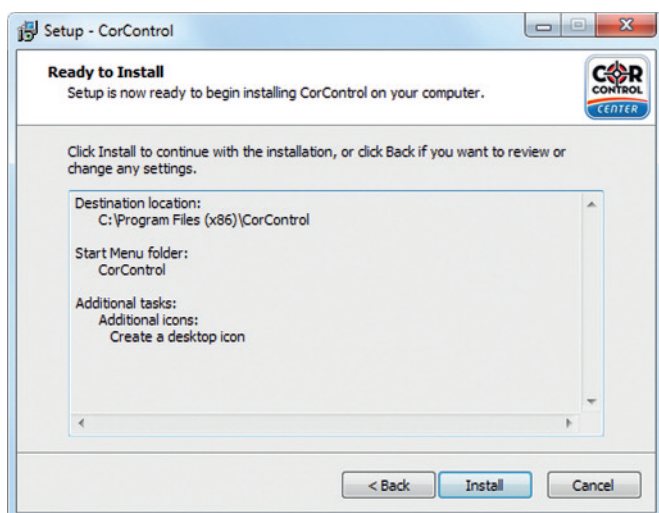


Figure 6

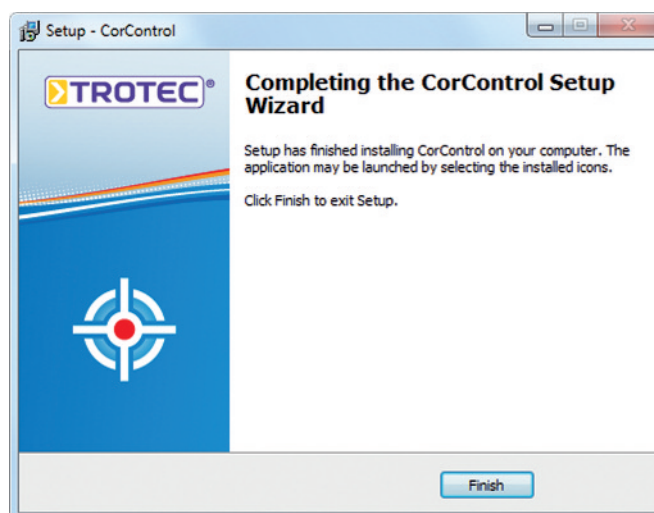


Figure 7

A dialogue window that ends the backup assistant (fig. 7). opens when the program has been successfully installed.

All the components that are needed to use the CorControl Software are installed when the installation has been completed. A program icon like the one shown will appear on your desktop or in the start menu.

Click on the program icon to start the program.



TROTEC GmbH & Co. KG

Grebbener Str. 7 · D-52525 Heinsberg
Tel. +49 2452 962-400 · Fax +49 2452 962-200
www.trotec.com · E-mail: info@trotec.com