

EN

INSTRUCTIONS
DEHUMIDIFIER

Table of contents

Information on the use of these instructions 2

Safety 2

Information about the device..... 5

Transport and storage..... 6

Assembly and start-up 7

Operation 8

Errors and faults 11

Maintenance 13

Technical annex..... 17

Disposal 20

Information on the use of these instructions

Symbols



Danger

This symbol indicates dangers to the life and health of persons due to extremely flammable gas.



Warning

This signal word indicates a hazard with an average risk level which, if not avoided, can result in serious injury or death.



Warning of electrical voltage

This symbol indicates dangers to the life and health of persons due to electrical voltage.

Notice

This signal word indicates important information (e.g. material damage), but does not indicate hazards.



Info

Information marked with this symbol helps you to carry out your tasks quickly and safely.



Follow the manual

Information marked with this symbol indicates that the instructions must be observed.

You can download the current version of these instructions via the following link:



TTK 55 E



<https://hub.trotec.com/?id=47708>

TTK 63 E



<https://hub.trotec.com/?id=47709>

Safety

Read this manual carefully before starting or using the device. Always store the manual in the immediate vicinity of the device or its site of use.



Warning

Read all safety warnings and all instructions.

Failure to follow the warnings and instructions may result in electric shock, fire and/or serious injury.

Save all warnings and instructions for future reference.

This appliance can be used by children aged from 8 years and above and persons with reduced physical, sensory or mental capabilities or lack of experience and knowledge if they have been given supervision or instruction concerning use of the appliance in a safe way and understand the hazards involved.

Children shall not play with the appliance. Cleaning and user maintenance shall not be done by children without supervision.

- Do not use the device in potentially explosive rooms or areas and do not install it there.
- Do not use the device in an aggressive atmosphere.
- Place the device in an upright and stable position on a horizontal and stable surface.
- Let the device dry out after a wet clean. Do not operate it when wet.
- Do not use the device with wet or damp hands.
- Do not expose the device to directly squirting water.
- Do not cover the device during operation.
- Do not sit on the device.
- This appliance is not a toy. Keep away from children and animals.

- Check the device occasionally during operation.
- Check accessories and connection parts for possible damage prior to every use of the device. Do not use any defective devices or device parts.
- Ensure that all electric cables outside of the device are protected from damage (e.g. caused by animals). Never use the device if electric cables or the power connection are damaged!
- The mains connection must correspond to the specifications in the Technical annex.
- Insert the mains plug into a properly fused mains socket.
- Observe the device's power input, cable length and intended use when selecting extensions to the power cable. Completely unroll extension cables. Avoid electrical overload.
- Do not under any circumstances use the device if you detect damages on the mains plug or power cable. If the supply cord is damaged, it must be replaced by a special cord or assembly available from the manufacturer or its service agent.
Defective power cables pose a serious health risk!
- Before carrying out maintenance, care or repair work on the device, remove the mains plug from the mains socket. Hold onto the mains plug while doing so.
- Switch the device off and disconnect the power cable from the mains socket when the device is not in use.
- When positioning the device, observe the minimum distances from walls and other objects as well as the storage and operating conditions specified in the Technical annex.
- Make sure that the air inlet and outlet are not obstructed.
- Make sure that the suction side is kept free of dirt and loose objects.
- Never insert any objects or limbs into the device.
- Do not remove any safety signs, stickers or labels from the device. Keep all safety signs, stickers and labels in legible condition.
- Only transport the device in an upright position with an emptied condensation tank/tray or drain hose.
- Discharge the collected condensate before transport and storage. Do not drink it. Health hazard!
- Only use original spare parts, for otherwise safe and functional operation cannot be ensured.



Safety warnings for devices containing flammable refrigerants



Warning

Do not drill into or burn.



Warning

Do not use any means other than those recommended by the manufacturer for accelerating the defrosting process or cleaning the device.



Warning

Every person working with or at the refrigerant circuit must be able to provide a certificate of qualification issued by a body accredited by the industry, demonstrating their competence in the safe use of refrigerants based on a procedure well-known in the industry.

- Only position the device in rooms where potentially leaking refrigerant cannot accumulate. Unventilated rooms in which the device is installed, operated or stored must be built in a way to ensure that potentially leaking refrigerant cannot accumulate. This serves to avoid fire or explosion hazards resulting from an ignition of the refrigerant by an electric furnace, cooking stove or another ignition source.
- Store the appliance in a room without continuously operating open flames (for example an operating gas appliance) or other potential ignition sources (for example an operating electric heater, hot surfaces);
- Please note that the refrigerant is odourless.
- Only install the device in compliance with the national installation regulations.
- Please observe the local regulations.
- Observe the national regulations for gas installations.
- Only install, operate and store the device in a room measuring more than 4 m².
- Store the device in a way that no mechanical damage can occur.
- R290 is a refrigerant that complies with European environmental regulations. No part of the cooling circuit may be perforated.
- Observe the maximum refrigerant capacity in the technical data.
- Service work may only be carried out in accordance with the manufacturer's specifications. If maintenance and repair work require the support of additional persons, the person trained in handling flammable refrigerants shall continuously supervise the work carried out.
- The entire refrigerant circuit is a maintenance-free, hermetically sealed system and may only be maintained or repaired by specialist companies for cooling and air-conditioning or by the manufacturer.

Intended use

Only use the device for drying and dehumidifying room air, while adhering to and following the technical data.

In addition, the device may also be used as a kind of clothes dryer to dry wet laundry.

Intended use comprises:

- dehumidifying and drying:
 - living rooms, bedrooms and basements
 - bathrooms
 - holiday homes, caravans
- maintaining the dryness of:
 - storage spaces, archives, laboratories, garages
 - changing rooms etc.

Any use other than the intended use is regarded as misuse.

Reasonably foreseeable misuse

- The device is not intended for industrial use.
- Do not place any objects, e.g. clothing, on the device.
- Do not use outdoors.
- Do not use the device in the immediate vicinity of swimming pools, bathtubs and showers.
- Never immerse the device in water.
- Do not make any unauthorised modifications, alterations or structural changes to the device.
- Do not place the device on wet or flooded ground, e.g. near floor drains.

Personnel qualification

People who use this device must:

- have basic knowledge of how to safely handle electrical equipment.
- have read and understood the instructions, especially the Safety chapter.

Maintenance tasks which require the housing to be opened must only be carried out by specialist companies for cooling and air-conditioning or by the manufacturer.

Safety signs and labels on the device

Notice

Do not remove any safety signs, stickers or labels from the device. Keep all safety signs, stickers and labels in legible condition.

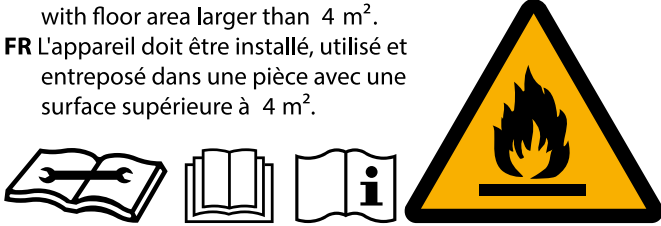
The following safety signs and labels are attached to the device:

WARNING • WARNUNG • ATTENTION

DE Das Gerät muss in einem Raum mit einer Grundfläche größer als 4 m² aufgestellt, betrieben und gelagert werden.

EN Appliance shall be installed, operated and stored in a room with floor area larger than 4 m².

FR L'appareil doit être installé, utilisé et entreposé dans une pièce avec une surface supérieure à 4 m².



Follow the manual

This symbol indicates that the instructions must be observed.



Follow the repair manual

Disposal, maintenance and repair work of the refrigerant circuit may only be carried out in accordance with the manufacturer's specifications and by persons having a certificate of qualification. A corresponding repair manual is available from the manufacturer upon request.

Residual risks



Danger

Natural refrigerant propane (R290)!

H220 – Extremely flammable gas.

H280 – Contains gas under pressure; may explode if heated.

P210 – Keep away from heat, sparks, open flames and other ignition sources. No smoking.

P377 – Leaking gas fire: Do not extinguish, unless leak can be stopped safely.

P410+P403 – Protect from sunlight. Store in a well-ventilated place.



Warning of electrical voltage

Work on the electrical components must only be carried out by an authorised specialist company!



Warning of electrical voltage

Risk of electric shock!

The device is not protected against water.

There is a risk of electric shock!

Never use the device in areas where dripping, spraying or running water can enter the device! Never immerse the device in water!



Warning of electrical voltage

Risk of electric shock!

Risk of an electric shock if the device comes into contact with water!

Do not use this device in the immediate vicinity of bathtubs, showers or swimming pools!



Warning of electrical voltage

Before any work on the device, remove the mains plug from the mains socket!

Do not touch the mains plug with wet or damp hands.

Hold onto the mains plug while pulling the power cable out of the mains socket.

Behaviour in the event of an emergency

1. Switch the device off.
2. Disconnect the device from the mains by removing the mains plug from the socket. When doing so, be sure to hold the plug, not the cable.
3. Do not reconnect a defective device to the mains.

Information about the device

Device description

The device uses the principle of condensation to automatically dehumidify rooms.

The fan sucks damp room air through the air inlet, the air filter, the evaporator and to the condenser located behind it. The air is cooled at the cold evaporator until it is below the dew point.

Water vapour contained in the room air precipitates on the evaporator fins as condensation or rime. The dehumidified, cooled air is slightly warmed at the condenser and blown out again. The drier air thus conditioned mixes with the air in the room. The humidity in the room where the device is positioned is reduced as air constantly circulates through the device.

Depending on the air temperature and the relative humidity, the condensed water either drops continuously or only during the defrost phase through the integrated drain nozzle into the condensation tank below. It is fitted with a float to measure the filling level.

The device has a control panel for operating and controlling the functions.

Once the maximum filling level of the condensation tank is reached or if the tank is not installed correctly, the condensation tank indicator light on the control panel will be illuminated and an error code will be displayed as well (see chapter Operating elements). The device switches off. The indications only disappear once the emptied condensation tank is reinserted.

Optionally, the condensed water can be drained by attaching a hose at the condensation connection.

The device can reduce the relative humidity of a room to approx. 30 %.

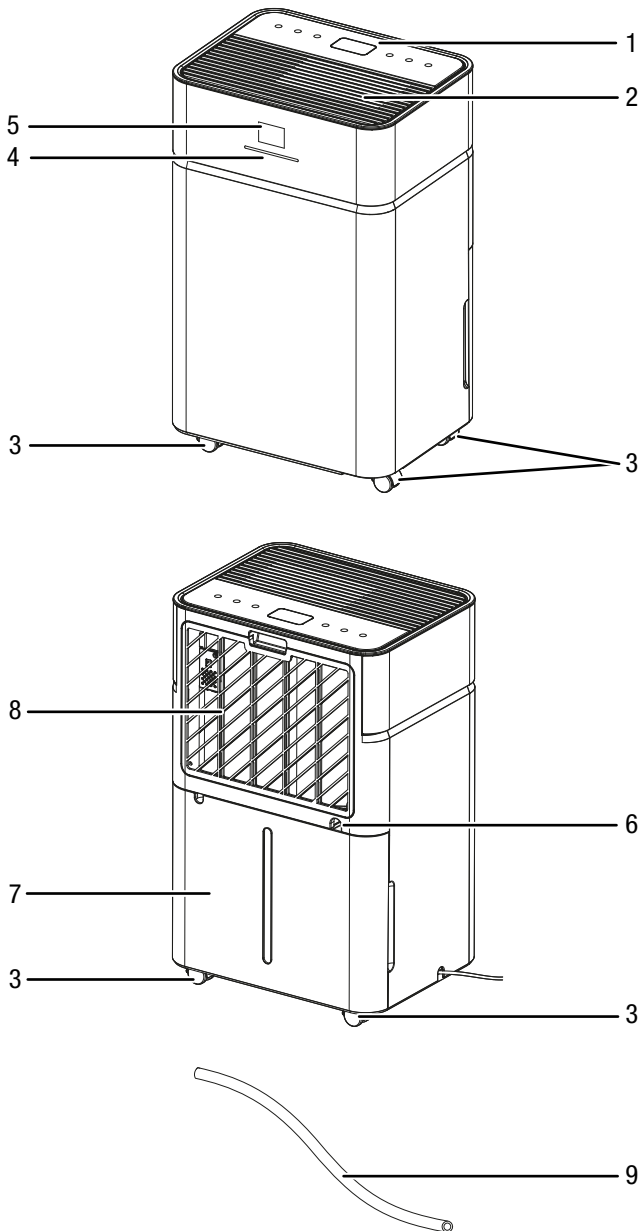
In addition, the device may also be used as a kind of clothes dryer to dry wet laundry in living or working spaces.

Moreover, the device has an ionisation function that can be switched on in addition. The released ions remove pollen, dust, viruses and bacteria from the room air. Thanks to this air purification method, the quality of the room air can be additionally improved.

Because of the heat radiation generated during operation, the room temperature may rise slightly.

The device is not protected against water (IPX0).

Device depiction



Transport and storage

Notice

If you store or transport the device improperly, the device may be damaged.
 Note the information regarding transport and storage of the device.

Transport

Please note that additional transport regulations might apply to devices containing flammable refrigerants. The equipment's arrangement and the maximum number of components to be transported together can be gathered from the applicable transport regulations.

To make the device easier to transport, it is fitted with wheels.

Before transporting the device, observe the following:

- Switch off the device by pressing the *On/Off* button (16).
- Disconnect the device from the mains by removing the mains plug from the socket. When doing so, be sure to hold the plug, not the cable.
- Drain the remaining condensate from the device and the condensation drain hose (see chapter Maintenance).
- Do not use the power cable to drag the device.
- Only wheel the device on firm and level surfaces.

After transporting the device, proceed as follows:

- Set up the device in an upright position after transport.

No.	Designation
1	Control panel with display
2	Air outlet
3	Wheels
4	Colour LED display
5	Front display
6	Condensation drain hose connection
7	Condensation tank with filling level indicator
8	Air inlet with integrated air filter
9	Condensation drain hose

Storage

Before storing the device, observe the following:

- Drain the remaining condensate from the device and the condensation drain hose (see chapter Maintenance).
- Clean the condensation tank and/or the condensation drain hose if necessary (see chapter Maintenance).
- Disconnect the device from the mains by removing the mains plug from the socket. When doing so, be sure to hold the plug, not the cable.

When the device is not being used, observe the following storage conditions:

- Only store the device in a room measuring more than 4 m².
- Only position the device in rooms where there is no source of ignition (e.g. open flames, an active gas appliance, an electric heater or hot surfaces).
- Store the device in a dry location and protected from frost and heat.
- Store the device in an upright position where it is protected from dust and direct sunlight.
- If required, use a cover to protect the device from invasive dust.
- Place no further devices or objects on top of the device to prevent it from being damaged.

Assembly and start-up

Scope of delivery

- 1 x Device
- 1 x Condensation drain hose, length: 0.6m, diameter: 14 mm
- 1 x Manual

Unpacking the device



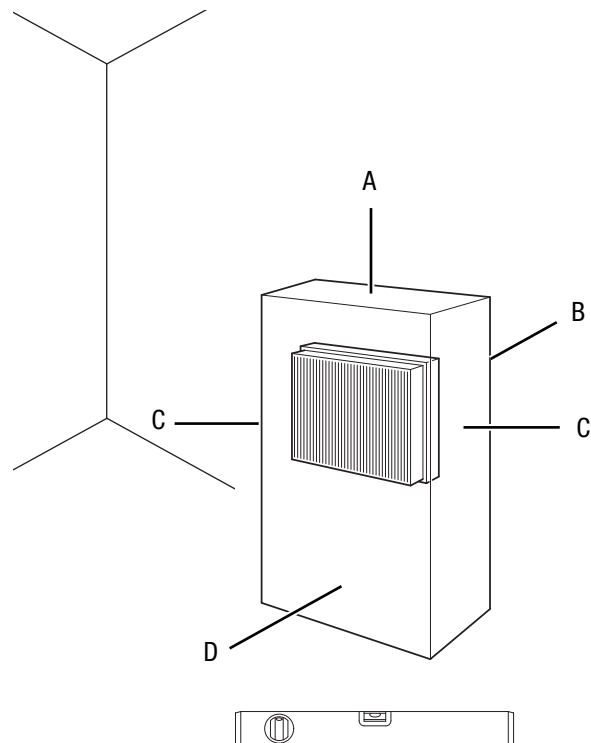
Warning

There is a danger of suffocation for children due to packaging material! Keep packaging films and parts away from children. There is a risk of death due to suffocation.

1. Open the cardboard box and take the device out.
2. Completely remove the packaging.
3. Fully unwind the power cable. Make sure that the power cable is not damaged and that you do not damage it during unwinding.

Start-up

When positioning the device, observe the minimum distance from walls or other objects as described in the chapter Technical annex.



- Before restarting the device, check the condition of the power cable. If there are doubts as to the sound condition, contact the customer service.
- Only position the device in rooms where potentially leaking refrigerant cannot accumulate.
- Store the appliance in a room without continuously operating open flames (for example an operating gas appliance) or other potential ignition sources (for example an operating electric heater, hot surfaces);
- Place the device in an upright and stable position on a horizontal and stable surface.
- Do not create tripping hazards when laying the power cable or other electric cables, especially when positioning the device in the middle of the room. Use cable bridges.
- Make sure that extension cables are completely unrolled.
- When positioning the device, keep a sufficient distance to heat sources.
- Make sure that no curtains or other objects interfere with the air flow.

Inserting the condensation tank

- Ensure that the float inside the condensation tank is inserted correctly.
- Ensure that the condensation tank is empty and inserted correctly.

Connecting the power cable

- Insert the mains plug into a properly secured mains socket.



Info

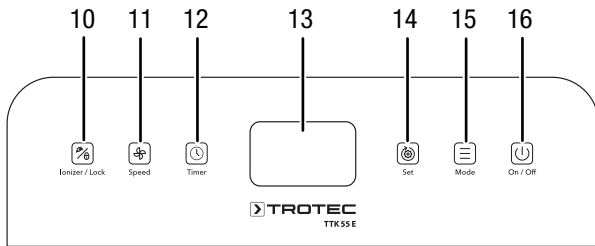
The top display and the front display indicate the current room humidity.

Operation

Notes:

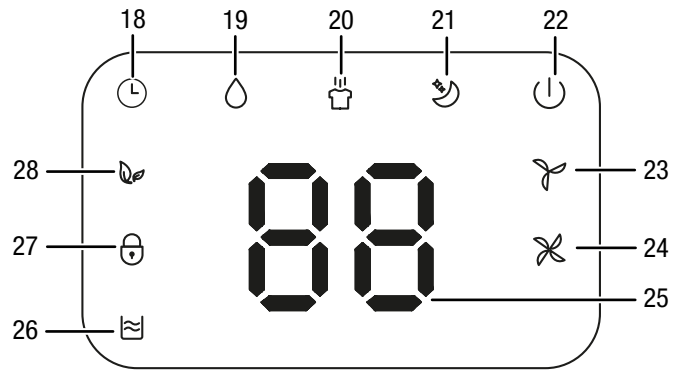
- Avoid open doors and windows.
- After being switched on, the device operates fully automatically.

Control panel



No.	Designation	Meaning
10	<i>Ionizer/Lock button</i>	For switching ionization on or off For switching child lock on or off
11	<i>Speed button</i>	For setting a high or low fan speed
12	<i>Timer button</i>	Switching the timer on or off
13	Display	Indicates the segment display Indicates the LED indicator lights
14	<i>Set button</i>	Setting the relative room humidity Setting the number of hours for the timer function
15	<i>Mode button</i>	Selection button for operating modes: <i>Dehumidification</i> <i>Laundry drying function</i> <i>Night mode</i>
16	<i>On/Off button</i>	Switching the device on or activating standby mode

Display



No.	Designation	Meaning
17	<i>Timer LED</i>	Timer active
18	<i>Dehumidification LED</i>	Operating mode <i>Dehumidification</i> active
19	<i>Laundry drying LED</i>	<i>Laundry drying</i> mode is enabled
20	<i>Night mode LED</i>	<i>Night mode</i> is enabled
21	<i>Power LED</i>	Illuminated during operation
22	<i>Low fan speed LED</i>	Illuminated when a low fan speed is set
23	<i>High fan speed LED</i>	Illuminated when a high fan speed is set
24	Segment display	Indication of the current relative room humidity level Indication of the relative room humidity level during set-up Indication of the number of hours during timer programming Indication of error codes
25	<i>Condensation tank full LED</i>	Illuminated when the condensation tank is full
26	<i>Child lock LED</i>	Child lock is active.
27	<i>Ionization LED</i>	Ionization active



Warning of electrical voltage

Risk of electric shock!
The device is not protected against water. There is a risk of electric shock!
Never use the device in areas where dripping, spraying or running water can enter the device! Never immerse the device in water!



Info

An acoustic signal is emitted each time a button is pressed.

Switching the device on

Once you have completely installed the device as described in the chapter Assembly and start-up, you can switch it on.

1. Press the *On/Off* button (16).
 - ⇒ The *Power* LED (21) is illuminated.
 - ⇒ The fan starts at high fan speed.
 - ⇒ The device starts in *Dehumidification* mode with a preset room humidity of 50 %.

Setting the operating mode

- Dehumidification
- Laundry drying function
- Night mode

Dehumidification

The device runs until the desired relative room humidity is reached. Then the compressor switches off and the fan continues to run for another 3 minutes before it switches off. Once the desired relative room humidity is exceeded, the compressor and fan switch back on.

In this operating mode, the desired relative room humidity can be set at any time in increments of 5 % within a setting range of 30 % to 80 %.

1. Press the *Mode* button (15) until the *Dehumidification* LED (18) is illuminated.
 - ⇒ The room air is dehumidified.

Setting the desired relative room humidity

You can change the relative room humidity in *Dehumidification* and *Night* mode.

1. Repeatedly press the *Set* button (14) to set the room's relative humidity level. Setting is possible in the range between 30 % and 80 % in increments of 5 %.
 - ⇒ The desired relative room humidity is indicated in the segment display (24) and on the front display (5) for approx. 5 seconds. Then the current relative room humidity is displayed again.

Colour LED for current room humidity

Regardless of the operating mode, the colour LED indicates the current relative room humidity by means of 3 different colours.

LED colour	Meaning
Blue	Relative room humidity equal to or below 45 %
Green	Relative room humidity between 45 % and 65 %
Red	Relative room humidity above 70 % or device fault

Setting the fan speed

This function allows you to choose between low and high fan speed in the *Dehumidification* and *Laundry drying* modes.

1. Repeatedly press the *Speed* button (11) to select the desired fan speed.
 - ⇒ If the fan speed is set to a low level, the *Low fan speed* LED (22) is illuminated.
 - ⇒ If the fan speed is set to a high level, the *High fan speed* LED (23) is illuminated.

Laundry drying mode

In addition, the device may also be used as a kind of clothes dryer to dry wet laundry in living or working spaces.

When positioning the device or a clothes horse, please observe the minimum distances specified in the technical data.

The following humidity values are suitable for drying laundry:

- cupboard dry = 46 % relative humidity
- iron dry = 58 % relative humidity
- slightly dried = 65 % relative humidity

If necessary, use a measuring device to determine the humidity level.

The room air is continuously dehumidified in this operating mode, regardless of the humidity level.

1. Press the *Mode* button (15) until the *Laundry drying* LED (19) is illuminated.
 - ⇒ The *Laundry drying function* is activated.

Night mode

In night mode, the *Power* (21) and *Night mode* (20) LEDs become darker after 10 seconds if no button is pressed. All other LEDs and the displays go out.

The fan speed is preset to a low stage and cannot be adjusted.



Info

In night mode, no acoustic signal is emitted when the condensation tank is full. Only the *Condensation tank full* LED (25) is illuminated.

Proceed as follows to switch on night mode:

- ✓ The device is switched on.
- 1. Press the *Mode* button (15) for approx. 5 seconds.
 - ⇒ The *Night mode* LED (20) is illuminated.
- 2. Set the desired relative humidity.
- 3. Press the *Mode* button (15) again for approx. 5 seconds to switch off the night mode.
 - ⇒ The *Night mode* LED (20) disappears.

Setting the timer

The timer function switches the device on or off after the set time has elapsed.

The function can be set in addition in all operating modes. The timer can be set in hourly increments to a value between 1 and 24 hours.

- ✓ **Automatic switch-on:** The mains plug is inserted, the device is in standby mode.
- ✓ **Automatic switch-off:** The device is switched on.
 1. Press the *Timer* button (12).
 - ⇒ The segment display and the front display flash.
 2. Press the *Set* button (14) until the desired number of hours is indicated on the segment display.
 3. Wait for 5 seconds in order to save the setting.
 - ⇒ The current humidity level appears in the segment display (24) and on the front display (5) again.
 - ⇒ The *Timer* LED (17) is illuminated.
 - ⇒ After the predefined time, the device switches itself on or to standby mode.
 4. Press the *Timer* button (12).
 - ⇒ The segment display (24) and the front display (5) flash and indicate the time until automatic switch-on/switch-off.
 5. Press the *Timer* button (12) again while the segment display and the front display are flashing.
 - ⇒ The timer function is switched off.

The timer is automatically deactivated in the following cases:

- Manually switching the device on disables the automatic switch-on function.
- Disconnecting the mains plug disables the automatic switch-off function.
- *FL* appears in the segment display (24) and on the front display (5).

Notice

The device must not be left unattended in a freely accessible room with an activated timer.

Ionization

This function additionally purifies the room air by means of ionization. The released ions remove pollen, dust, viruses and bacteria from the room air.

Ionisation can be switched on in all operating modes.

1. Press the *Ionizer/Lock* button (10) to start the ionization.
 - ⇒ The *Ionization* LED (27) is illuminated.
2. Press the *Ionizer/Lock* button (10) again to switch the ionization function off.
 - ⇒ The *Ionization* LED (27) goes out.

Child lock

The child lock prevents the buttons on the control panel from being used.

1. Press the *Ionizer/Lock* button (10) for approx. 5 seconds.
 - ⇒ An acoustic signal is emitted.
 - ⇒ The *Child lock* LED (26) is illuminated.
2. Press the *Ionizer/Lock* button (10) for approx. 5 seconds to switch the child lock function off again.
 - ⇒ An acoustic signal is emitted.
 - ⇒ The *Child lock* LED (10) goes out.

Memory function

After a power failure during operation the device will automatically be switched back on after a while. The selected settings are saved. Any programmed timer settings will not be saved.

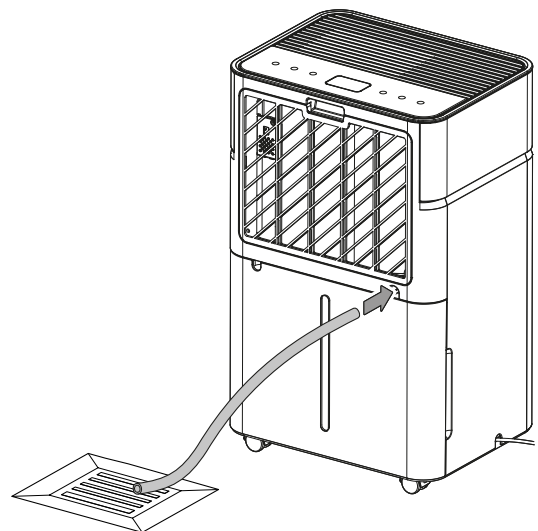
Auto stop function

If the water tank is full, not inserted correctly or the relative room humidity has been reached, the device will stop automatically.

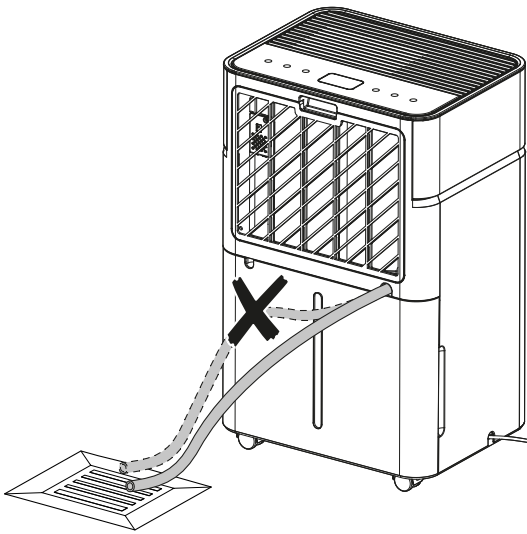
Operation with hose attached to the condensation connection

For continuous operation or unattended dehumidification, please connect the supplied condensation drain hose to the device.

- ✓ The supplied hose (diameter = 14 mm) is ready for use.
 - ✓ The device is switched off.
1. Push one end of the hose onto the hose connection.



2. Guide the other hose end to a suitable drain or sufficiently dimensioned collection container. Please note that the hose must not be kinked.



Remove the hose if you want to collect the condensate in the condensation tank again. Allow the hose to dry prior to storage. The hose can be connected in any operating mode for continuous operation.

Automatic defrosting

At low ambient temperatures, ice may form at the vaporizer during dehumidification. The device will then perform automatic defrosting. Dehumidification is briefly interrupted during defrosting. The fan keeps running.

The duration of defrosting can vary. Do **not** switch off the device during automatic defrost. Do **not** remove the mains plug from the mains socket.

Shutdown



Warning of electrical voltage

Do not touch the mains plug with wet or damp hands.

- Switch off the device by pressing the *On/Off* button (16).
- Disconnect the device from the mains by removing the mains plug from the socket. When doing so, be sure to hold the plug, not the cable.
- If necessary, remove the condensation drain hose and any residual fluid from it.
- Empty the condensation tank/tray if necessary.
- If required, clean the device according to the "Maintenance" chapter.
- Store the device according to the Transport and storage chapter.

Errors and faults

The device has been checked for proper functioning several times during production. If malfunctions occur nonetheless, check the device according to the following list.

Notice

Wait for at least 3 minutes after maintenance and repair work. Only then switch the device back on.

The device does not start:

- Check the power connection.
- Check the power cable and mains plug for damage.
- Check the on-site fusing.
- Check the filling level of the condensation tank and empty it if necessary. The *Condensation tank full* LED (25) must not light up. The segment display (24) and the front display (5) must not indicate the error code *FL*.
- Check the condensation tank for correct seating.
- Check the room temperature. Observe the device's permissible operating range according to the technical data.
- If the device is not starting, have the electricians checked by a specialist company or by the manufacturer.

The device is running, but there is no formation of condensate:

- Check the float in the condensation tank for dirt. If necessary, clean the condensation tank. The float must be able to move freely.
- Check the room temperature. Observe the device's permissible operating range according to the technical data.
- Ensure that the relative room humidity complies with the technical data.
- From the outside, check the condenser for dirt (see chapter Maintenance). If the condenser is dirty, have it cleaned by a specialist company or by the manufacturer.

The device is loud or vibrates:

- Check whether the device is set up in a stable and upright position.

Condensate is leaking:

- Check the device for leaks.

The compressor does not start:

- Check the room temperature. Observe the device's permissible operating range according to the technical data.
- Ensure that the relative room humidity complies with the technical data.
- Check whether the overheating protection of the compressor has tripped. Disconnect the device from the mains and let it cool down for approx. 10 minutes before reconnecting it.
- The device might carry out an automatic defrost. During automatic defrost, the device does not dehumidify.

The device gets very warm, is loud or is losing power:

- From the outside, check the device for dirt (see chapter Maintenance). If the inside of the device is dirty, have it cleaned by a specialist company for cooling and air-conditioning or by the manufacturer.

The device still does not operate correctly after these checks:

Please contact the customer service. If necessary, bring the device to a specialist company for cooling and air-conditioning or to the manufacturer for repair.

Error codes

The device can display the following error messages. The error messages appear in the segment display (24) and on the front display (5).

Error code	Cause	Remedy
E1	Fault at humidity sensor	Disconnect the device briefly from the mains. Should the error still be displayed after the restart, please contact the customer service.
CL	Ambient temperature too low	Increase the ambient temperature.
CH	Ambient temperature too high	Reduce the ambient temperature.
FL	Condensation tank full or not inserted correctly	Empty the condensation tank or check the condensation tank for correct fit.

Maintenance

Maintenance intervals

Maintenance and care interval	before every start-up	as needed	at least every 2 weeks	at least every 4 weeks	at least every 6 months	at least annually
Check air inlet and outlet for dirt and foreign objects and clean if necessary	X			X		
Clean the exterior		X				X
Visually check the inside of the device for dirt		X				X
Check the air filter for dirt and foreign objects and clean or replace if necessary	X		X			
Replace the air filter					X	
Check for damage	X					
Check the attachment screws		X				X
Test run						X
Empty and clean the condensation tank and/or drain hose		X				

Maintenance and care log

Device type:

Device number:

Maintenance and care interval	1	2	3	4	5	6	7	8	9	10	11	12	13	14	15	16
Check air inlets and outlets for dirt and foreign objects and clean if necessary																
Check the air filter for dirt and foreign objects and clean or replace if necessary																
Clean the exterior																
Visually check the inside of the device for dirt																
Replace the air filter																
Check the attachment screws																
Test run																
Empty and clean the condensation tank and/or drain hose																
Comments																

1. Date: Signature:	2. Date: Signature:	3. Date: Signature:	4. Date: Signature:
5. Date: Signature:	6. Date: Signature:	7. Date: Signature:	8. Date: Signature:
9. Date: Signature:	10. Date: Signature:	11. Date: Signature:	12. Date: Signature:
13. Date: Signature:	14. Date: Signature:	15. Date: Signature:	16. Date: Signature:

Activities required before starting maintenance



Warning of electrical voltage

Do not touch the mains plug with wet or damp hands.

- Switch off the device by pressing the *On/Off* button (16).
- Disconnect the device from the mains by removing the mains plug from the socket. When doing so, be sure to hold the plug, not the cable.



Warning of electrical voltage

Tasks which require the device to be opened must only be carried out by authorised specialist companies or by the manufacturer.

Refrigerant circuit



Danger

Natural refrigerant propane (R290)!

H220 – Extremely flammable gas.

H280 – Contains gas under pressure; may explode if heated.

P210 – Keep away from heat, sparks, open flames and other ignition sources. No smoking.

P377 – Leaking gas fire: Do not extinguish, unless leak can be stopped safely.

P410+P403 – Protect from sunlight. Store in a well-ventilated place.

- The entire refrigerant circuit is a maintenance-free, hermetically sealed system and may only be maintained or repaired by specialist companies for cooling and air-conditioning or by the manufacturer.

Safety signs and labels on the device

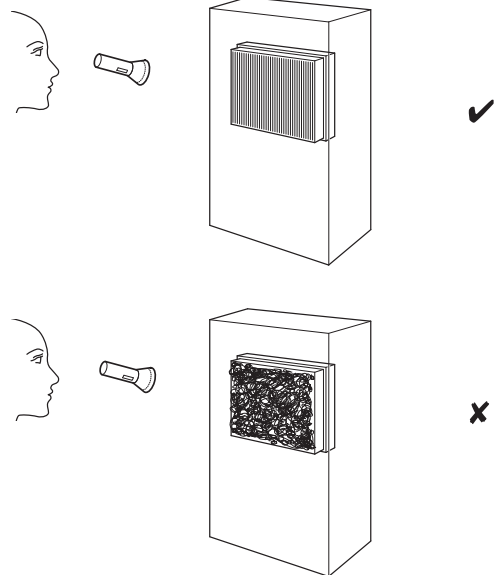
Check the safety signs and labels attached to the device at regular intervals. Replace illegible safety signs!

Cleaning the housing

Clean the housing with a soft, damp and lint-free cloth. Make sure that no moisture enters the housing. Protect electrical components from moisture. Do not use any aggressive cleaning agents such as cleaning sprays, solvents, alcohol-based or abrasive cleaners to dampen the cloth.

Visual inspection of the inside of the device for dirt

1. Remove the cover with integrated air filter.
2. Use a torch to illuminate the openings of the device.
3. Check the inside of the device for dirt.
4. If you see a thick layer of dust, have the inside of the device cleaned by a specialist company for cooling and air-conditioning or by the manufacturer.
5. Replace the cover with the integrated air filter.



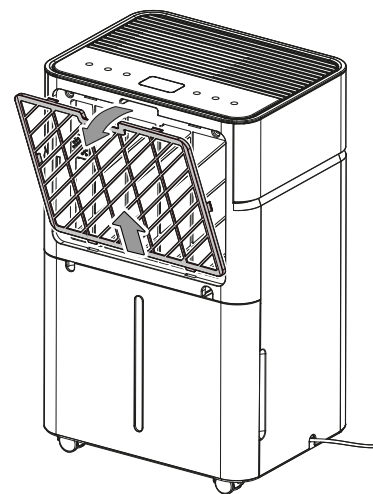
Cleaning the air filter

Notice

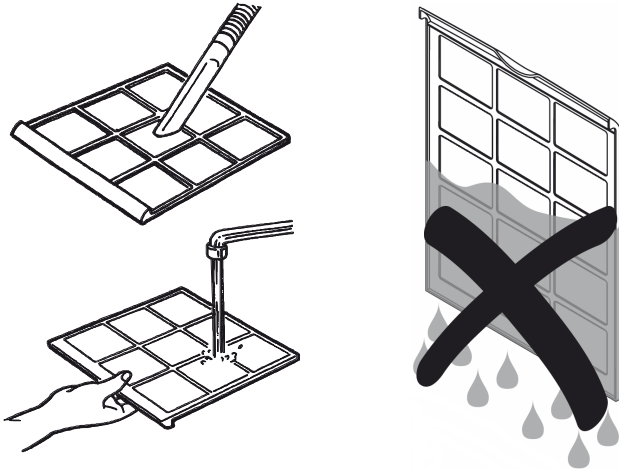
Ensure that the integrated air filter is not worn or damaged. Before reinserting the air filter, make sure that it is undamaged and dry!

The filter has to be cleaned as soon as it is dirty. It becomes clear that it is contaminated if the device's performance is reduced (see chapter Errors and faults).

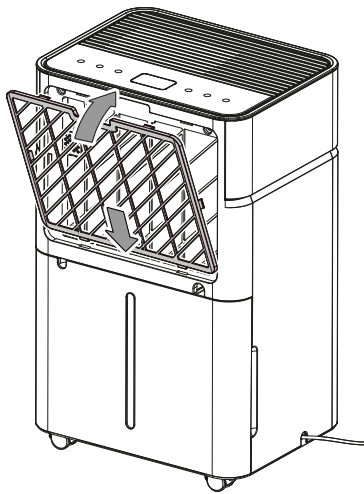
1. Remove the cover of the air inlet.



2. Clean the cover and the integrated filter with a slightly damp, soft, lint-free cloth. If the filter is heavily contaminated, clean it with warm water mixed with a neutral cleaning agent.



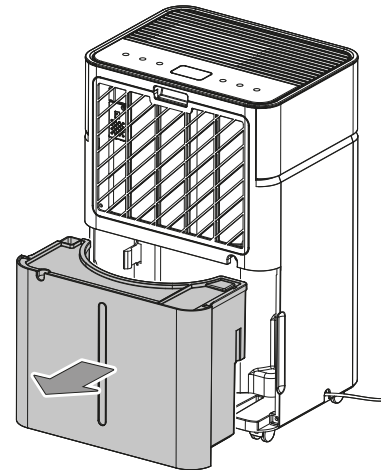
3. Allow the filter to dry completely. Do not insert the air inlet cover into the device with a wet filter!
4. Insert the air inlet cover back into the device.



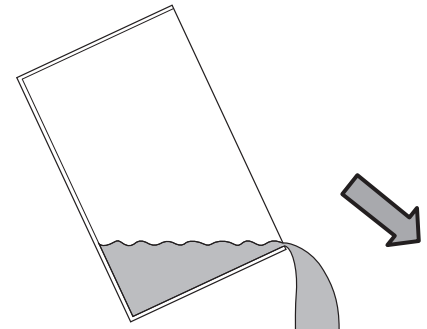
Emptying the condensation tank

If the condensation tank is full or not inserted correctly, an acoustic signal will be emitted. In addition, the *Condensation tank full* LED (25) is illuminated. The error code *FL* flashes in the segment display (24) and on the front display (5). The compressor and fan will switch off.

1. Take the condensation tank out of the device.

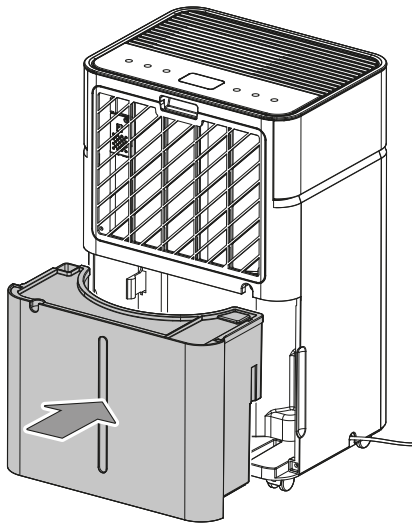


2. Empty the condensation tank over a drain or sink.



3. Rinse the tank with clear water. Clean the tank regularly using a mild cleaning agent (no detergent!).

4. Refit the condensation tank into the device.
Make sure not to damage the float when inserting or removing the condensation tank.
In doing so, make sure that the float is positioned correctly.
In doing so, make sure that the condensation tank is inserted correctly, for otherwise the device cannot be switched back on.



Activities required after maintenance

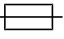
If you want to continue using the device:

- Reconnect the device to the mains.

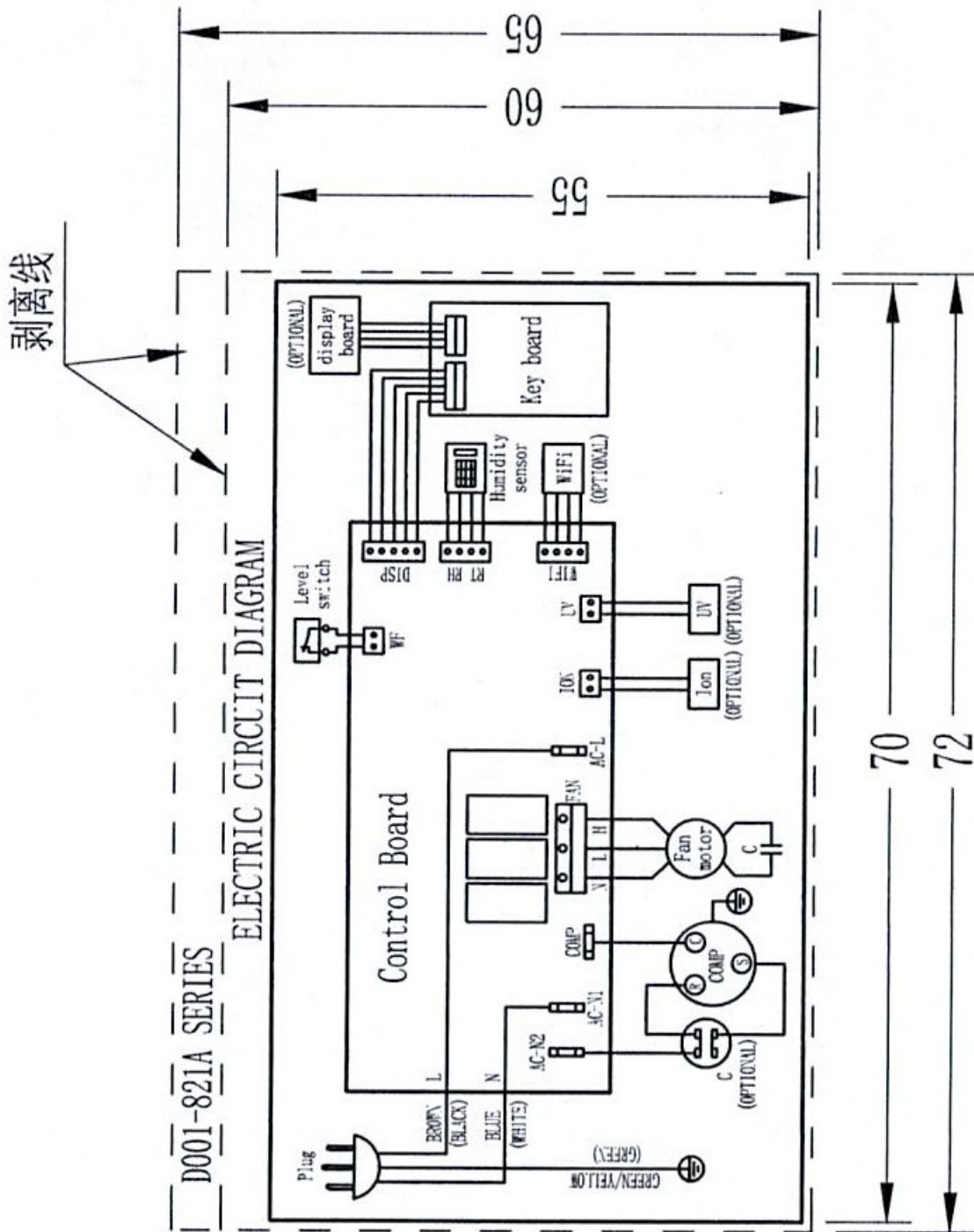
If you do not intend to use the device for a considerable time:

- Store the device according to the Transport and storage chapter.

Technical annex
Technical data

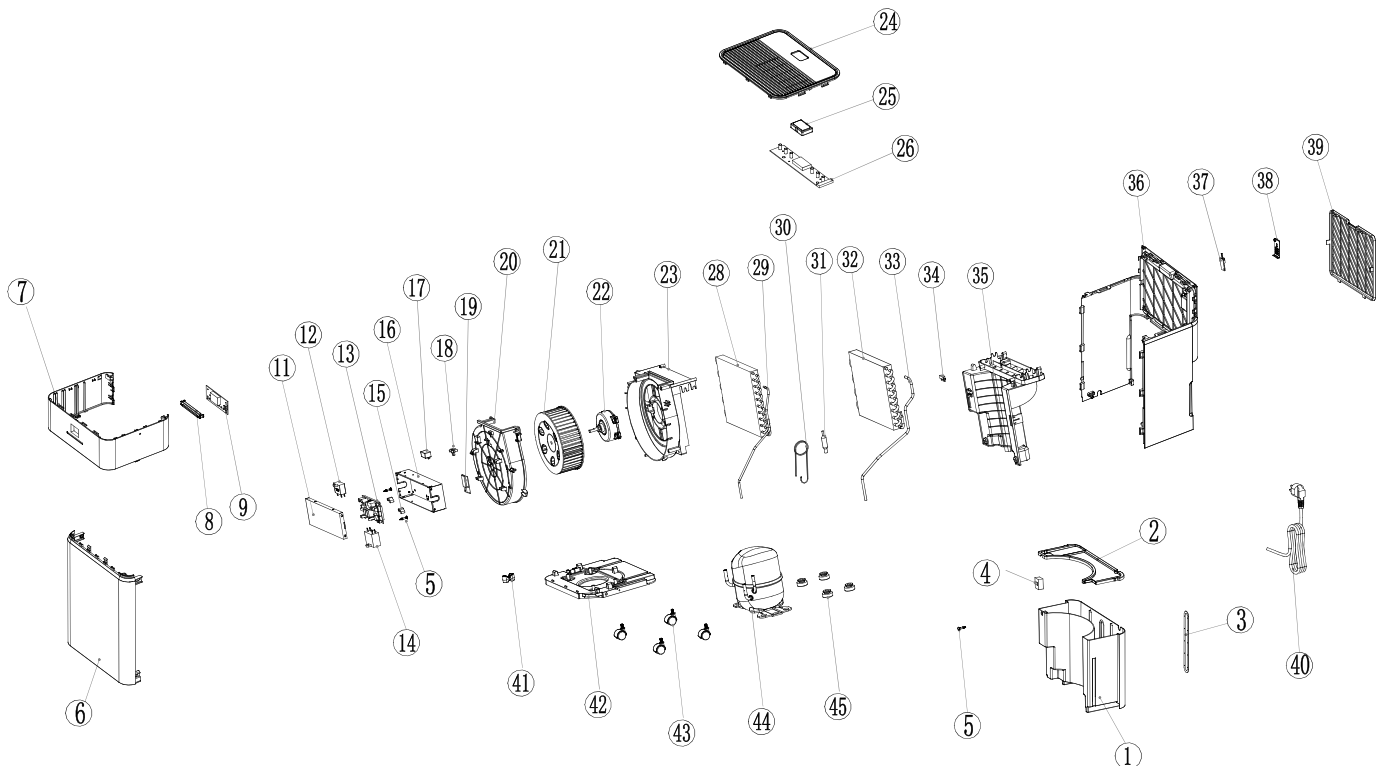
Parameter	Value	
	TTK 55 E	TTK 63 E
Model	TTK 55 E	TTK 63 E
Max. dehumidification performance	16 l / 24 h	20 l / 24 h
Dehumidification performance @ 30 °C and 80 % RH	16 l / 24 h	20 l / 24 h
Air flow rate	150 m ³ /h max.	150 m ³ /h max.
Operating range (room temperature)	5 °C to 35 °C	5 °C to 35 °C
Operating range (relative humidity)	20 % to 90 % RH	20 % to 90 % RH
Suction side pressure	0.7 MPa	0.7 MPa
Discharge side pressure	3.2 MPa	3.2 MPa
Max. permissible pressure	3.2 MPa	3.2 MPa
Mains connection	220 V / 50 Hz	220 V / 50 Hz
Max. power consumption	0.3 kW	0.33 kW
Nominal current	1.4 A	1.7 A
Fusing 	3.15 A (slow-blowing)	3.15 A (slow-blowing)
Type of protection	IPX0	IPX0
Refrigerant	R290	R290
Amount of refrigerant	50 g	54 g
GWP factor	3	3
CO ₂ equivalent	0.00015	0.000162
Condensation tank capacity	4.5 l	4.5 l
Sound pressure level (at a distance of 1 m)	41 dB(A)	41 dB(A)
Dimensions (length x width x height)	305 x 240 x 496 mm	305 x 240 x 496 mm
Minimum distance to walls and other objects	A: top: 40 cm B: rear: 20 cm C: side: 20 cm D: front: 20 cm	40 cm 20 cm 20 cm 20 cm
Weight	13 kg	13 kg

Circuit diagram



Overview of spare parts

Note: The position numbers of the spare parts differ from those describing the positions of the components mentioned in these instructions.



NO.	SPARE PART	QTY.	NO.	SPARE PART	QTY.
1	Water Tank	1	24	Top Panel	1
2	Water Tank Cover	1	25	Display Mirror	1
3	Water Level Mirror	1	26	Display PCB	1
4	Magnetic Floater	1	28	Condensor Assembly	4
5	Plastic Rivets	3	29	High Pressure Pipe	1
6	Front Shell	1	30	Capillary	1
7	Front Shell	1	31	Filter	1
8	Light Guide Panel	1	32	Evaporator Assembly	1
9	Front Display Board (optional)	1	33	Low Pressure Pipe	1
11	Electric Box Cover	1	34	Magnetic Switch Wire	1
12	Fan Capacitator (optional)	1	35	Partition Panel	1
13	Main Board	1	36	Back Shell	1
14	Compressor Capacitator (optional)	1	37	Humidity Sensor	1
15	Spacer	2	38	Humidity Sensor Box Cover	1
16	Electric Box	1	39	Filter Frame	1
17	ION Emission Brush (optional)	1	40	Power Cord	1
18	Negative ION (optional)	1	41	Cable Clamp	1
19	WIFI Module (optional)	1	42	Base Pan	1
20	Wind Duct Cover	1	43	Castor	4
21	Wind Wheel	1	44	Compressor	1
22	Motor	1	45	Compressor Pad	4
23	Wind Duct	1			

Disposal

Always dispose of packing materials in an environmentally friendly manner and in accordance with the applicable local disposal regulations.



The icon with the crossed-out wheeled bin indicates that this device and any associated components must not be disposed of with household waste at the end of their life, in accordance with the Waste Electrical and Electronic Equipment Directive (2012/19/EU) and national laws.

You will find collection points for free return of waste electrical and electronic equipment in your vicinity. The addresses can be obtained from your municipality or local administration. You can also find out about other return options that apply for many EU countries on the website <https://hub.trotec.com/?id=45090>. Otherwise, please contact an official recycling centre for electronic and electrical equipment authorised for your country.

The separate collection of waste electrical and electronic equipment aims to enable the re-use, recycling and other forms of recovery of waste equipment as well as to prevent negative effects for the environment and human health caused by the disposal of hazardous substances potentially contained in the equipment.

Have the refrigerant (propane) disposed of appropriately and according to the national regulations by a company with the relevant certification (European Waste Catalogue 160504).

Only for United Kingdom

According to Waste Electrical and Electronic Equipment Regulations 2013 (SI 2013/3113) (as amended) devices that are no longer usable must be collected separately and disposed of in an environmentally friendly manner.

Trotec GmbH

Grebber Str. 7
52525 Heinsberg
Germany

☎ +49 2452 962-0

☎ +49 2452 962-200

✉ online@trotec.com

www.trotec.com